

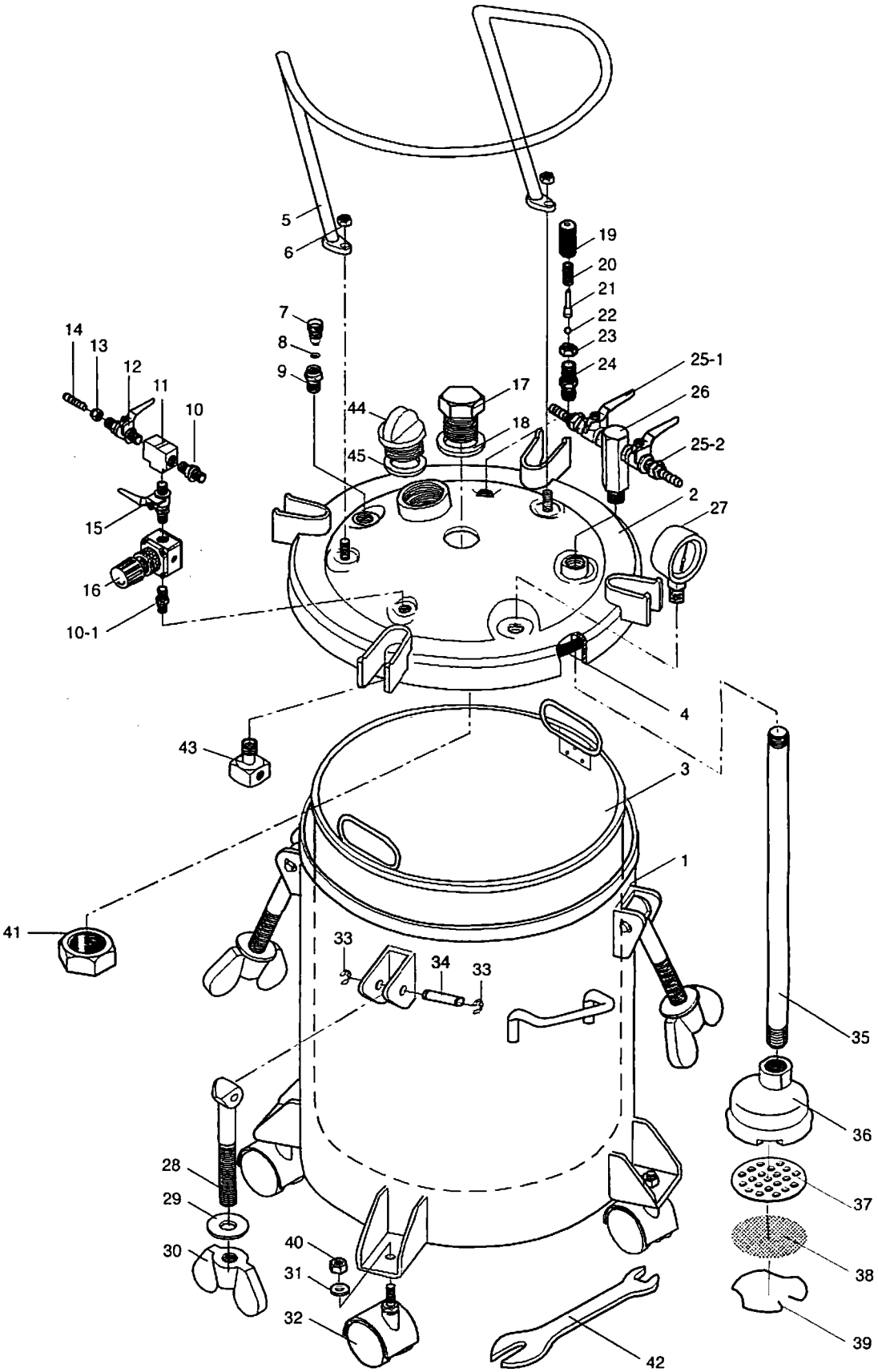
# MANUAL PRESSURE AIR TANK

---

OPERATOR'S MANUAL



# SCHEMATIC DRAWING



ITEM NO.	名 稱	DESCRIPTION	NO.OFF
1	塗 料 桶	Main body	1
2	桶 蓋	Lid assembly	1
3	塗 料 內 桶	Material tank	1
4	氣 密 墊	Gasket	1
5	保 護 圈	Parts guard	1
6	六 角 螺 帽	Hexagon nut	2
7	洩 氣 旋 塞	Release cock	1
8	O 型 環	O - ring	1
9	接 頭 ( 1 )	Adapter	1
10	接 頭 ( 2 )	Air inlet adapter	1
10-1	接 頭 ( 3 )	Adapter	1
11	三 通	Branch tee	1
12	出 口 拷 克	Air outlet cock	1
13	螺 帽	Nut	1
14	風 管 接 頭	Air outlet	1
15	進 風 拷 克	Air inlet cock	1
16	調 壓 閥	Pressure regulator	1
17	中 心 圈	Centering guide	1
18	迫 緊	Seal ring	1
19	安 全 閥 外 殼	Safety valve shell	1
20	彈 簧	Spring	1
21	頂 針	Needle rod	1
22	鋼 珠	Steel ball	1
23	六 角 螺 帽	Hexagon nut	1
24	接 頭	Adapter	1
25	塗料出口拷克	Material outlet cock	2
26	塗料出口接頭	Material outlet adapter	1
27	壓 力 錶	Pressure gauge	1
28	活 節 螺 栓	Swing bolt	4
29	平 面 華 司	Washer	4

ITEM NO.	名稱	DESCRIPTION	NO.OFF
30	蝶形螺帽	Thumb nut	4
31	平面華司	Washer	4
32	活動輪	Moving wheel	4
33	C形扣環	C - snap ring	8
34	固定插銷	Cotter	4
35	塗料管	Fluid tube	1
36	塗料吸頭	Absorption apparatus	1
37	濾網襯墊	Filter base	1
38	濾網	Material filter	1
39	彈簧扣環	Snap ring	1
40	六角螺帽	Hexagon nut(Small)	4
41	六角螺帽	Hexagon nut(Big)	1
42	板手	Spanner	1
43	風向導流器	Air flowguider	1
44	進料螺帽	Cap screw	1
45	迫緊	Seal ring	1

## GENERAL INTRODUCTION

This pressure air tank is equipped with an agitating rod, air pressure regulator, safety valve cock, material outlet, inner material tank and 4 moving wheels.

For its durability, all the component parts are made with the finest materials and were strictly inspected before assembling. The surface of the whole tank were also treated with special paint to carry out a durable and cheerful appearance.

The material being sprayed can be agitated manually by the agitating rod occasionally. That keeps the material smooth all the time during spraying and prevents the target product from color difference caused by material settling. This type of air tank is good enough for the material being sprayed is not too sticky and not too easy to settle down. The capacity of this versatile tank enables the operator to carry out almost any job with professional results. What's more, special materials such as enamel paint, chemical liquid, glue, fluid food, sticky material...etc can also be transported as smoothly as required.

## PRECAUTIONS

For the sake of performing perfectly all the time. Thoroughly cleaning is advised to execute right after every spraying. That ensures not only to reduce the necessity for spare parts and also to prolong the life-span of the tank.

## WARNING

1. This pressure tank is only allowed to provide material pressurized up to maximum load of **80 PSI**.  
Exceed this allowable load will result in explosion!
2. The safety valve is designed to protect the tank from over pressurizing.  
The original valve of it is set as 60 PSI.  
Make sure not to adjust it if not necessary indeed.
3. Do not make drilling, welding or other form of machining to any part of the tank.  
Because the tampering caused by those in-proper performing will weaken the structure.



# OPERATING

Check and make sure there is no pressured air remained in the tank before using. If there is, release it by turning release cock clock-wise until pressure bleeds down to Zero.

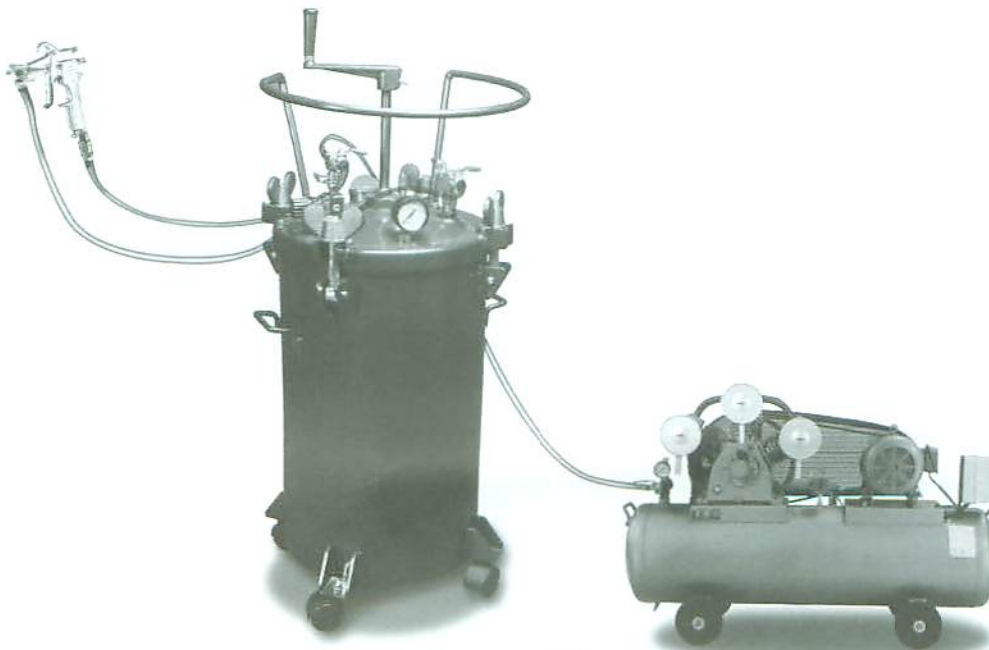
- 1 Loosen all thumb nuts and swing bolts, then remove the lid assembly away from the main tank.
- 2 Pour the material being sprayed into the material tank.
- 3 Replace the lid assembly and tighten it with main tank securely.
- 4 Connect the air supply hose to the air inlet.

Suggestion: It's better to add an air filter between this hose and the air inlet. For it can purify the air from dirt and entrained water or oil, which are not good to the material being sprayed.

- 5 Connect the atomizing air hose to the air outlet cock.
- 6 Connect the material hose to the fluid outlet.
- 7 Turn on the air supply, then turn air pressure regulator clock-wise to gain proper working pressure.

Make sure not to adjust it over 80 PSI!

- 8 Turn on air outlet cock.
- 9 Turn on fluid outlet cock.
- 10 Atomizing air for the spray gun can be adjusted at the gun by means of turning an adjusting valve on it.  
Or, adding an air regulator kit to the tank can be the same.
- 11 Operate your spray gun according to the instructions attached with it.
- 12 Refer to the figure shown below for a typical assembly.



## CLEANING AND MAINTENANCE

Thorough cleaning performed right after operating is always necessary. That reduce the necessity for spare parts and also prolong the durability of the tank. The process to do that is:

- 1 Turn air inlet cock off.
- 2 Turn on material cock.
- 3 Release all pressur eair remains in the tank.
- 4 Loosen all thumb nuts and swing bolts, then move the lid assembly to one side of the tank.
- 5 Loosen air cap retaining ring on spray gun about 3 turns.
- 6 Cup cloth over air cap on the gun, then pull trigger. This will force material back into the tank.
- 7 Empty the material tank. Then take some proper solvent to clean all the tank and the other parts which contact with material.
- 8 Pour clean solvent into the tank.
- 9 Replace the lid assembly back and tighten all the thumb nuts.
- 10 Turn air inlet cock on.
- 11 Operate the spray gun until clean solvent appears.
- 12 Repeat steps 1-6 in order to force solvent back to the tank.

## TROUBLE SHOOTING

PROBLEM	CAUSE	REMEDY
Indicator on air pressure gauge is out of function	Broken or damaged	Replace!
Material settles during operating	Not enough agitation for the material or the agitating propeller may be loosen or the air motor may be malfunctioner	Increase agitating or tighten it or check and replace part involved
Material or air leak out from lid gasket	Lid gasket has worn off or thumb nuts were not tightened enough	Replace it or tighten then
Air leak out from release cock after being screwed	The O-ring in it maybe damaged	Replace it
Material does not come out smoothky	Filter or Fluid tube may be stock	Check and clean it

Note: Check pressure gauge occasionally. The indicator should indicate to zero whenever there is no pressure in the tank.

---

**MANUAL PRESSURE AIR TANK**

