

TROUBLE SHOOTING

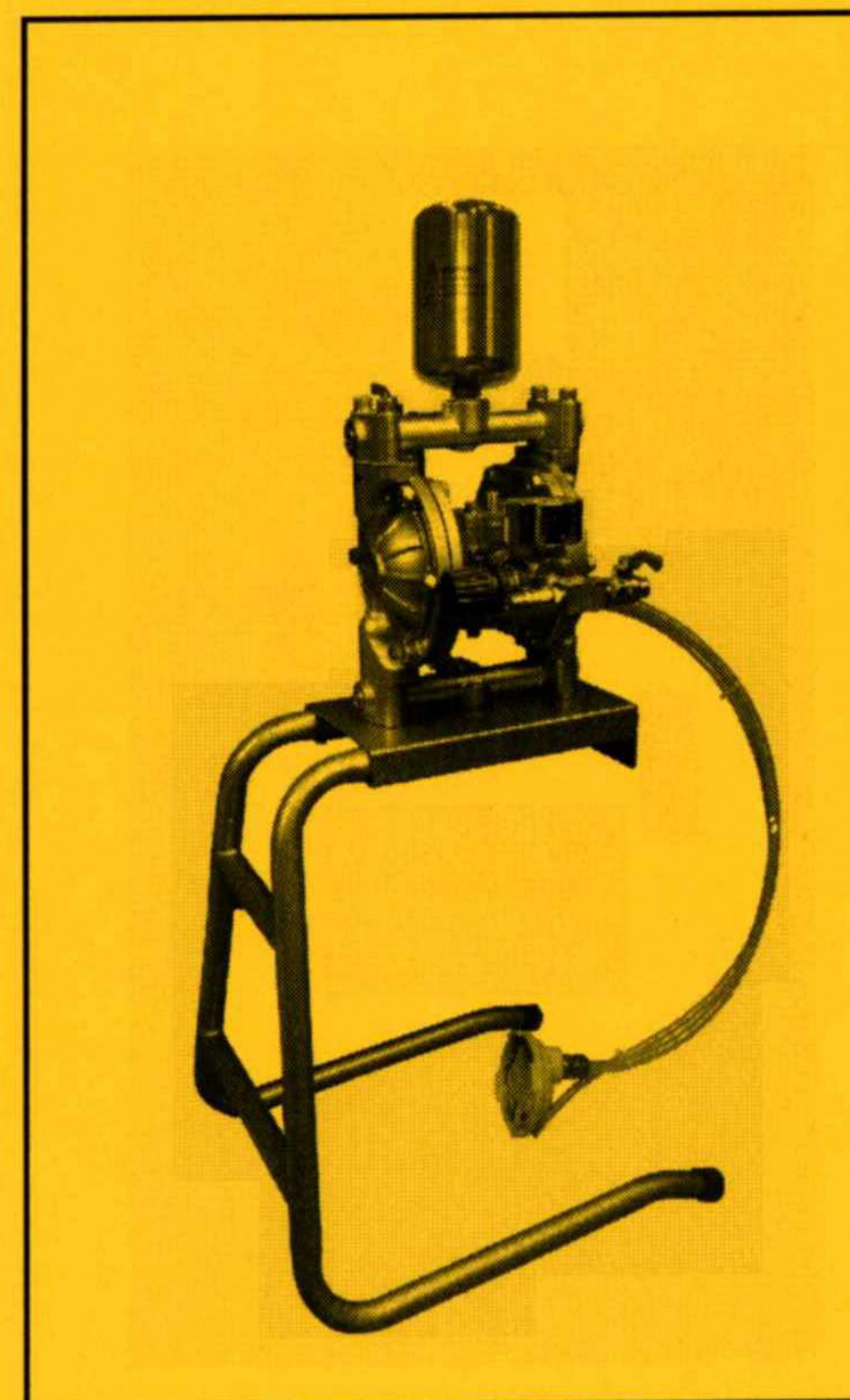
PROBLEM	CAUSE	REMEDY
Indicator on air pressure gauge is out of function	Broken or damaged	Replace parts (#55)
Malfunction of pressure regulator	Broken or damaged of the pressure regulator	Replace parts (#56)
Pump can not drive	Broken or damaged on the diaphragm	Replace parts (#23)
Weak pumping	Worn out of O-ring (#9, #10) in side of directional valve (#8)	Replace O-ring (#9、#10)

※Stainless steel double diaphragm pump is recommended for the application of water-based material or acid-material, alkaline material, corrosive material.

DIAPHRAGM PUMP

—STAINLESS STEEL

*Operating & Maintenance
Instructions*



Model No :DP-1SS

SAFETY INSTRUCTIONS



DANGER



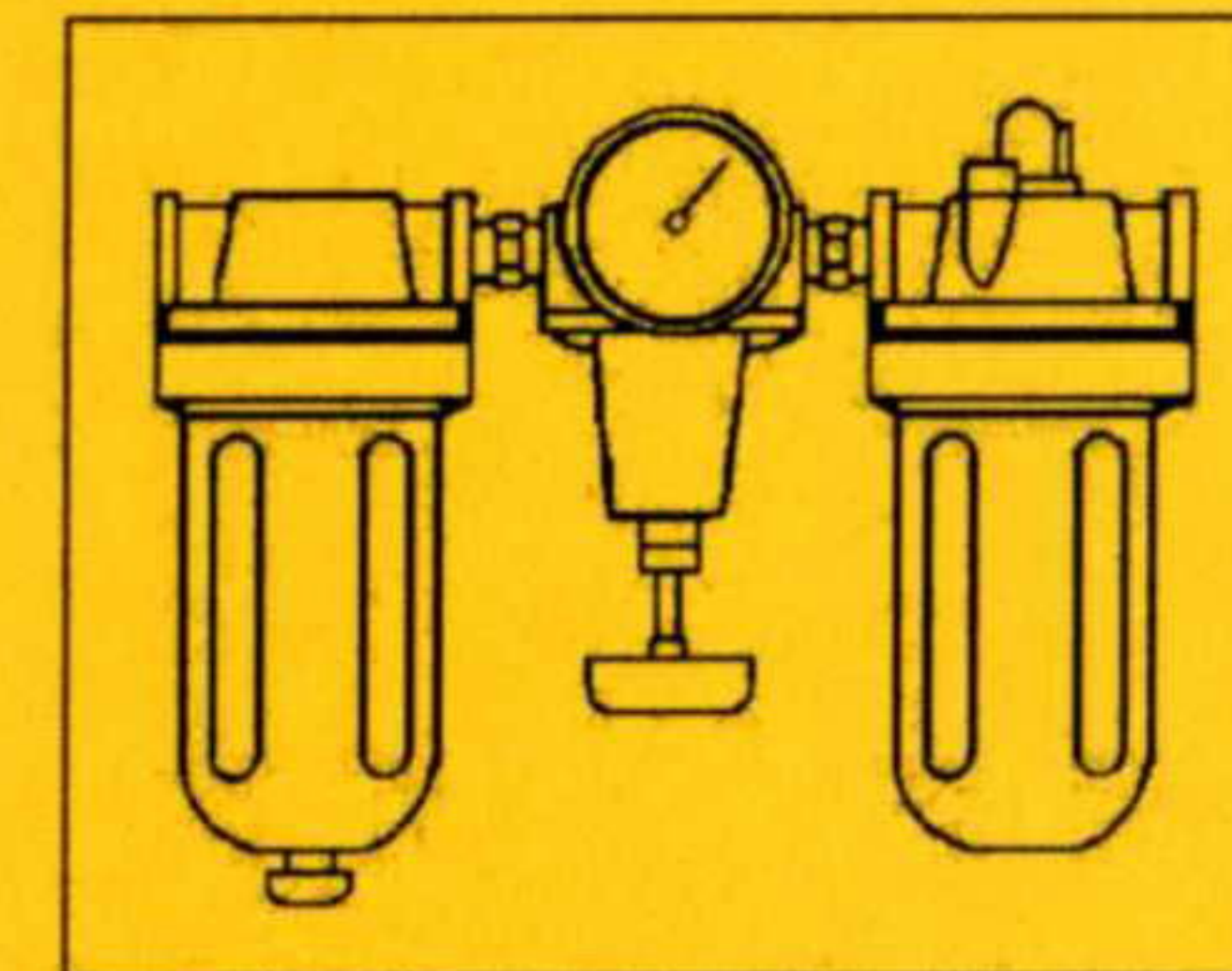
Do not attempt to operate the tool until you read and understand all safety precautions and manual instructions.

Never allow using oxygen or combustible gas as a power source for the tool.

Use filtered, lubricated, and regulated compressed air only.

Never use gasoline or other flammable liquids to clean the tool. Vapors in the tool will ignite by a spark and cause the tool to explode.

While using this diaphragm pump do not exceed maximum permissible operating pressure 5 bar.



- Many air tool users find it convenient to use oiler to help provide oil circulation through tool and increase the efficiency and useful life of the tool. Check oil level in the oiler daily. Many air tool users find it convenient to use a filter to remove liquid and impurities, which can rust or wear internal parts of the tool. A filter also increase the efficiency and useful of the tool. The filter must be checked on a daily basis and if necessary drained.



WARNING

- Wear hearing protection Employers and users are responsible for Ensuring the user or anyone near the tool wears this safety protection.
- Never point any operational pneumatic tools at yourself or at any other person.
- End users are responsible for the CE compliance safety valve.
- Anti electro static discharge shall be taken cant at some AEA.



GENERAL DESCRIPTIONS

Besides the double diaphragm pumps is being with general applications. Moreover, this is not to generate the spark in operation processing. So that, those can be used at the coating field in higher safety required. For example, The general paint coating, PU paint, UV special paint etc., all can be transferee, furthermore, can be connected with air spray gun, electrostatic spray gun & auto spray gun etc., directly. Meanwhile, the double diaphragm pumps also can be used to circulate ink for painting. The pumps are being with compact, equal & transferee with large volume etc., features. Now, we are sincerely recommended our best products to use.

CAUTION

For the sake of performing perfectly all the time. Thoroughly cleaning is advised to execute right after every pumping. That ensures not only to reduce the necessity for spare parts and also to prolong the life-span of the pump.

SPECIFICATIONS

- Pressure ratio: 1: 1
- Painting Tank Volume: 4 ~ 200L
- Transmitting Capacity: 5L/min (0.4kg/cm)
7.5L/min (1kg/cm)
10.5L/min(2kg/cm)
- Used Air Pressure: 1~5kg/cm
- Max. Painting Pressure: 5kg/cm
- Max. Pump Speed: 160times/min (5kg/cm)
- Min. Pump Speed: 80times/min (0.4kg/cm)



OPERATING AND PUT INTO SERVICE

Caution:

Check and make sure there is no pressurized fluid remained in the pump and pipes before using. If there is, release it by turning release cock clock - wise until pressure bleeds down to Zero.

Installation:

The first to check the air inlet orifice, thread type [1/4PT (F)] etc., and connect the pipe or hose and locking it subsequently, especially, the pipe as short as well. If you want to fit the steel tube, which must to install a soft tube or a adapter as well and convenience for operation. At last, to connect the spray gun or another attachment at other end.

Operating procedure:

The first to open the air cock little and to inspect which being with leakage or not on piping. if those are not and the, to open the air cock completely. Beware, the air in pressure must maintain (5kg/cm²) or lower, but not too small to effect the operation processing.

CAUTION

- (1) The inlet piping must install the R.F.L. unit for convenience regulate.
- (2) The inlet of pump must installed the lubricating device
(The lubricating oil must meet "SAE 10" standard or same oil grade.)
- (3) Every day, after the work is over, the pump and piping system must clean completely. Especially, the heavy viscosity painting must clean perfectly for confining processing progressing day by day.
- (4) If you want to disassemble the pump, you must to disassemble the piping, so that, which will not to happen the accident.
- (5) Every three month, the pump must to disassemble for cleaning once (Heavy viscosity paint) and to assemble can be refer the assembly fig.

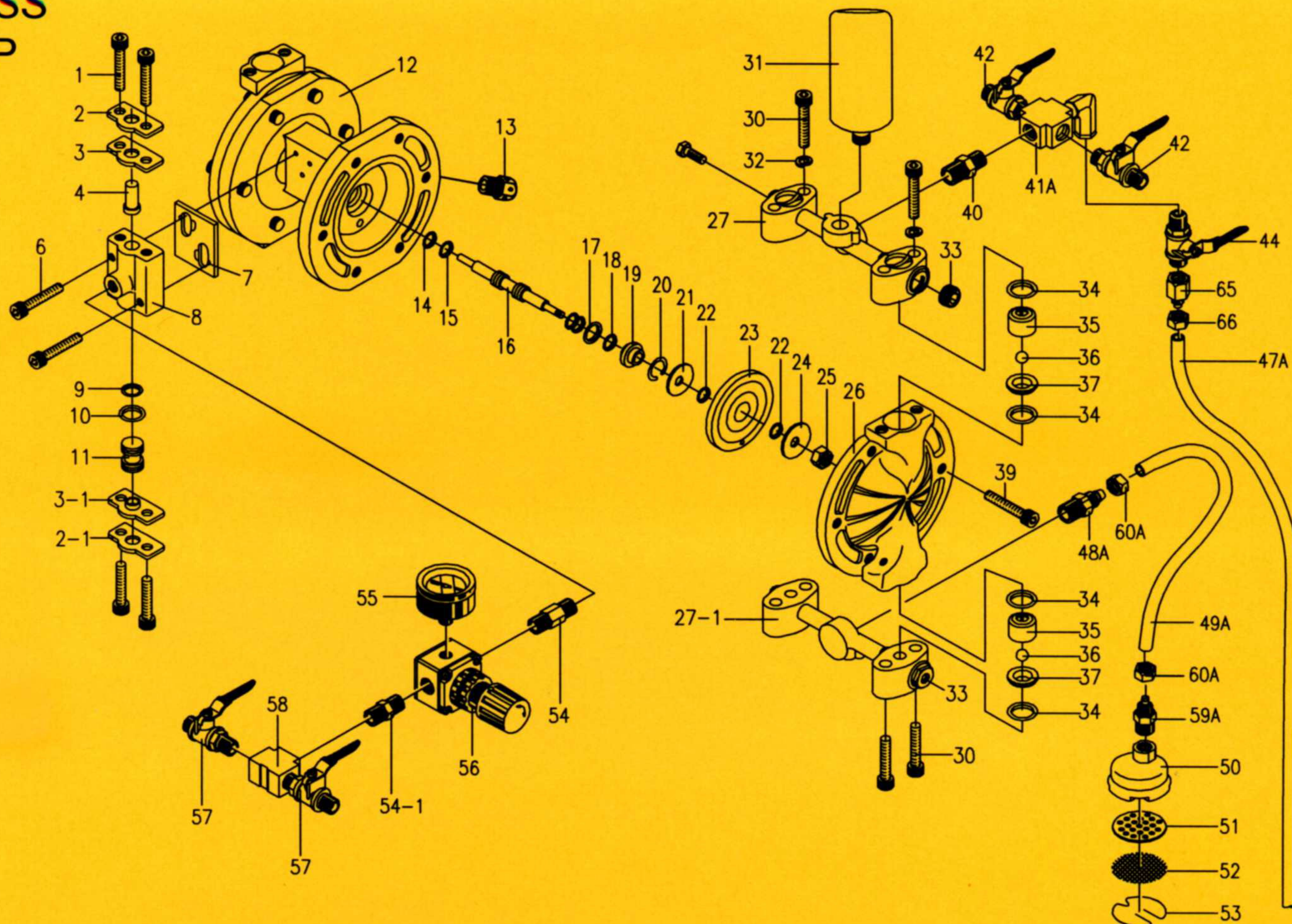
Cleaning and maintenance

Thorough cleaning performed right after operating is always necessary. Those reduce the necessity for spare parts and also prolong the durability of the pump.

Cleaning procedure:

1. Turn the pressure regulator counter clock to set the pressure zero.
2. Turn on fluid cock and fluid return cock.
3. Use a clean cloth to cover on the spray gun air nozzle.
Trigger the gun and force the remind fluid in the pipe back to the fluid tank.
4. Close the fluid out cock in the meantime the fluid return cock reminds open.
5. Put the fluid suction head into solvent.
6. Turn the pressure regulator to necessary working pressure 1kg/cm² (1bar).
7. Let pump recycle the solvent inside of the pump to clean all the paint.
8. Close the fluid return cock.
9. Open fluid out cock to clean inside of the pipe.
10. Repeat step 1 to 3 let the solvent inside pipe return to the solvent tank.

DP-1SS PUMP



DP-1SS -PARTS

NOTE : ※→Stainless steel made parts available for stainless diaphragm pump.

PARTS NO.	DESCRIPTION	Q' TY
※ 1	Counter-sink Screw	4
※ 2	Gasket	1
※ 2-1	Gasket	1
3	Gasket	1
3-1	Gasket	1
※ 4	Plunger	1
※ 6	Counter-sink Screw	2
7	Gasket	1
8	Direct Valve	1
9	O-ring	2
10	O-ring	2
11	Piston	1
12	Pump body	1
13	Silencer	1
14	O-ring	2
15	O-ring	2
※ 16	Shaft	1
17	O-ring	2
18	O-ring	2
19	Bushing	2
20	C-snap ring	2
21	Plate	2
22	O-ring	4
23	Diaphragm	2
※ 24	Plate	2
※ 25	Screw	2
※ 26	Side cover	2
※ 27	Manifold	1
※ 27-1	Manifold	1
※ 30	Countersink Screw	8

PARTS NO.	DESCRIPTION	Q' TY
※ 31	Storage Tank	1
※ 32	Washer	4
※ 33	Plug	5
34	O-ring	8
35	Ball Guide	4
※ 36	Ball	4
37	Retaining Seat	4
※ 39	Countersink Screw	12
※ 40	Adapter	1
※ 41A	Four-way block	1
※ 42	Fluid outlet cock	2
※ 44	Cock	1
47A	Fluid hose	1
※ 48A	Adapter	1
49A	Fluid hose	1
50	Absorption Apparatus	1
51	Filter Base	1
※ 52	Material Filter	1
※ 53	Snap Ring	1
54	Adapter	1
54-1	Adapter	1
55	Pressure Gauge	1
56	Pressure Regulator	1
57	Cock	2
58	Branch tee	1
※ 59A	Adapter	1
60A	Nut	2
※ 65	Adapter	1
66	Nut	1